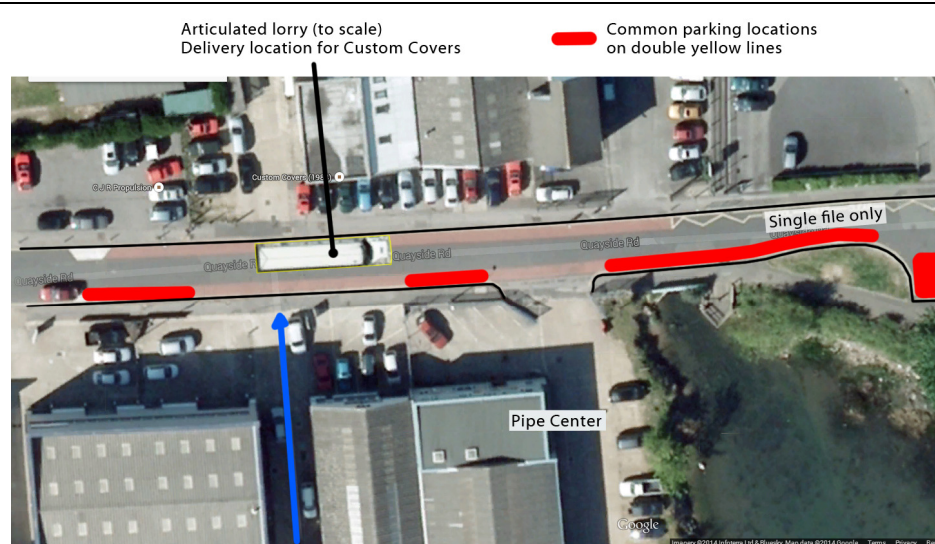


Date Received	Comments / Questions
28/02/2014	<p data-bbox="427 253 1254 315"><u>RESPONSE TO THE PROPOSAL TO EXPAND BITTERNE MANOR PRIMARY SCHOOL</u></p> <p data-bbox="427 376 1353 533">We would like to take this opportunity to express my objection to the proposal to increase the PAN to 60 for the 2015/16 intake. Whilst we understand that there is a requirement for the local authority to provide school places for the additional children who are expected to start school in 2015/16, we do not believe that Bitterne Manor is the most suitable option for expansion.</p> <p data-bbox="427 593 1326 656">We would like to address the physical location of the school and the means by which children travel to the school.</p> <p data-bbox="427 685 1342 777">According to the latest version of the School Organisation Guidance - Annex B Guidance for Decision Makers, in the section concerning travel and accessibility:</p> <p data-bbox="523 837 1326 1021">24. The decision-maker should bear in mind that a proposal should not unreasonably extend journey times or increase transport costs, or result in too many children being prevented from travelling sustainably due to unsuitable walking or cycling routes.</p> <p data-bbox="523 1050 1326 1207">25. A proposal should also be considered on the basis of how it will support and contribute to the LA's duty to promote the use of sustainable travel and transport to school.</p> <p data-bbox="427 1267 1353 1424">It is clear that being able to travel to school in an active or sustainable way is something that the policymakers believe is important, however due to the location of Bitterne Manor and the location of the additional children, the proposed expansion would result in very few if any of these children travelling to school in a sustainable manner.</p> <p data-bbox="427 1509 1353 1572">Figure 1 is an annotated map based on Google's aerial photography showing the section of Quayside Road immediately outside the school.</p>



Kemps Quay
Vehicle Access

Bitterne Manor Primary School is located on Quayside Road adjacent to a light industrial area. Pedestrians and cyclists can access the school from the east via the railway bridge link to Athelstan Road, or from the west through the industrial area. Vehicles, however, can only access from the west and parking is limited in the dead-end section. The industrial area can be particularly hazardous due to the movements of heavy goods vehicles which often coincide with school drop-off or collection times.

There are currently 210 pupils on roll. They arrive at school between 08:30 and 08:45 and most leave school at 15:20. Every day, between 20 and 40 children will be participating in after school activities so there will be typically 180 children leaving the site at 15:20.

In the morning this results in a steady stream of cars coming and going whereas in the afternoon cars will typically start arriving from 14:45 and stay until the children have been collected.

We estimate that there is space for 20 cars in the on-street parking and for a further 20 cars in the two residents' car parks, however, there are typically 10 residents' cars already parked so this section of road can accommodate 30 cars for parents.

On three separate afternoons we counted the number of cars entering the 20mph section of Quayside Road (on the left edge of fig.1) counting those either parking and waiting on Quayside Road in the areas marked in red or those passing the school gates but not those turning into the business premises.

My observations made between 14:45 and 15:20 were as follows:

Friday 7 th Feb	61 cars dry weather
Wednesday 12 th Feb	63 cars wet weather
Friday 14 th Feb	66 cars wet and windy weather

It is clear that there are already far more cars trying to wait in this area than there are legitimate spaces to accommodate them, the result is that cars are almost always parked on the double yellow lines opposite the school and along Quayside Road and sometimes on the zigzags, on the pavements, on the grass verges and across residents driveways.

Figures 2, 3 and 4 on the following pages are photographs showing the parking situation outside the school shortly before 15:20 on the 7th February –

these illustrate a relatively quiet afternoon on Quayside Road.



Figure 2. In the foreground cars are parked on double yellow lines restricting the remaining carriageway to single file only. The nearest car is completely blocking the only dropped kerb on this section of pavement which would cause considerable inconvenience to users of mobility scooters or wheelchairs. Beyond the verge on the right, two cars have parked in the turning area and a third car has double-parked alongside them. On the left, a goods vehicle is driving past the school gates further into the dead end section presumably hoping to find a convenient spot to turn around – the truck came back past 5 minutes later.



Figure 3. Plenty of cars parked on the south side of Quayside Road – there is insufficient space remaining on the carriageway for two cars to pass – this often leads to a gridlock with streams of traffic travelling towards each other in the single file areas unable to pass each other. The resolution often involves waiting several minutes until one side either reverses or drives up onto the pavement.



Figure 4. Looking in the other direction along Quayside Road, cars are parked up along the southern side of the road outside the business premises.

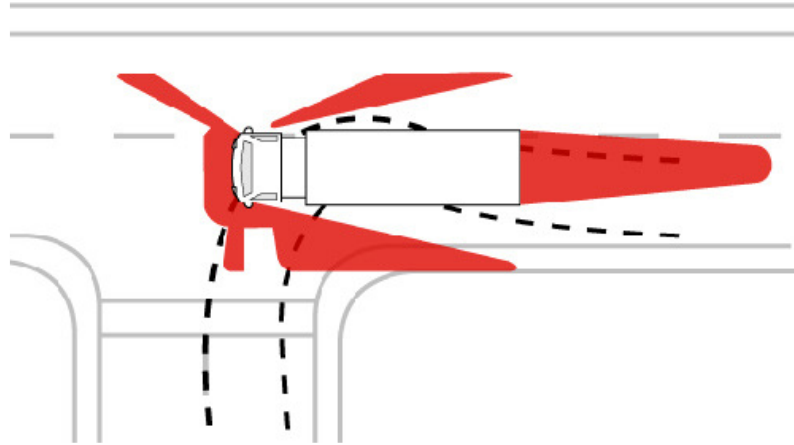
Clearly the quantity of cars being used to transport children to and from school does pose a hazard to children on foot and on scooters and bicycles. The parked cars present a safety risk to children crossing the road particularly with regard to visibility. Furthermore, some drivers drive very aggressively and tempers can be short – most weeks a car will be heard to accelerate furiously, sometimes with wheel spin and when drivers see a red mist they aren't looking out for children crossing. We have witnessed on several occasions parents having to haul children back onto the pavement at the crossing point outside the school to remove them from the path of a vehicle being driven aggressively.

It is, however, the heavy goods vehicles that pose the greatest risk to the children's safety.

Quayside Road is a light industrial area and the businesses adjacent to the school are regularly visited by HGVs making deliveries. Two businesses in particular often have large trucks manoeuvring or loading on Quayside Road during school drop-off and collection times.

Pipe Center are located on the southern side of Quayside Road and the end nearest the school. They are visited by articulated HGVs which need to reverse into a relatively narrow entrance to reach the loading bay. The trucks need to park in Quayside Road whilst the driver reports to reception and returns with a banksman to assist with the reversing. The manoeuvre requires the whole width of Quayside Road and often some of the pavement on the opposite side and some drivers require several attempts before they find the right line. Sometimes two trucks arrive at the same time and one has to wait out on the road until the other has finished.

When this happens during the school run, cars have to wait for the road to clear before they can proceed (and some drivers hate waiting) but more alarmingly, children are trying to walk along the northern pavement whilst the HGV is manoeuvring. Most children and many adults are unaware of how surprisingly little an HGV driver can actually see of the area around their vehicle from the driver's seat.



The areas marked in red cannot be seen at all by the driver, and objects in the other areas are only visible if the driver happens to be looking out of that window or mirror. When the vehicle is turning, the whole of the outer side behind the trailer is obscured and when reversing the driver will be mostly looking at the banksman (assuming there is one).

Children are particularly vulnerable due to their short height, their unawareness of how a vehicle might move and their lack of danger perception. To have children walking anywhere near a manoeuvring truck is very hazardous indeed.

Custom Covers is located on the northern side of Quayside Road opposite the access road to Kemps Quay. Their delivery vehicles usually park parallel to the edge of the road adjacent to their forecourt as shown in figure 1 by the truck highlighted in yellow. Sometimes, however, their drivers park the vehicle partially on the pavement and in some cases completely blocking the pavement. Goods are loaded on and off the truck by a forklift truck which mostly works on the pavement side but occasionally loads on the side of the vehicle in the road.

When this happens during the school run, drivers travelling east towards the school have their view up the road obscured and need to pass with care. Pedestrians, however, generally use the pavement on the northern side of the road. Some try to continue along the pavement beside the truck, others cross the road and then cross back again. For those who continue, they need to avoid the fork lift truck and also avoid open doors on the sides of the truck – children would be particularly vulnerable to not being seen by a fork lift driver, especially when a load is being carried. For those who cross, they need to find a safe place to cross and still be seen by drivers making their way past the truck on the road – crossing immediately behind the truck gives a risk of not being seen, but crossing away from the truck gives a risk of clashing with drivers who, having passed the truck, are moving back over to the left of the road. On the other side of Quayside Road, opposite Custom Covers, is the access road to Kemps Quay where vehicles cross the pavement on a large dropped kerb to enter or leave the area. Once this area has been negotiated, some pedestrians will then need to cross back over to the northern pavement. Each of these aspects presents a hazard to pedestrians and in particular

children. Figures 6, 7 and 8 show heavy goods vehicles in Quayside Road.



Figure 6. The HGV on the left is being unloaded by fork lift from Pipe Center, the one on the right is outside Custom Covers.



Figure 7. One Pipe Centre HGV waits whilst another manoeuvres in their gateway.



Figure 8. In order to manoeuvre in and out of the gates at Pipe Centre, an HGV needs to use part of the pavement to complete the turn. In these three images, the railings beside the lamppost mark the western pedestrian entrance to the school grounds.

This is the situation currently faced by children travelling to and from Bitterne Manor Primary School. With 60-70 cars collecting 180 pupils, we would suggest that well over half the children are travelling to and from school by car once families and childminders with more than one child per car are taken into consideration. Of the children who walk, scoot or cycle, we would suggest that at least 2/3 of these travel to the east which would leave maybe 20 - 30 children who walk through the industrial area on their way to and from school.

So what would change should the proposed expansion go ahead? Having studied the forecasted number of pupils and school places carefully, we asked James Howells at the public meeting held at Bitterne Manor on 28th January whether the council had more specific information about where the additional places were needed geographically and would the extra demand would be from within our catchment or another areas of the city. The response was that the council do have some more specific data than the three areas outlined in the report and that the additional places would be mostly filled by children from outside our catchment and from the central area of the city.

The boundary between Bitterne Manor's catchment area and adjacent schools in the central area of the city is the River Itchen. This would then imply that the majority of the 30 extra children would be travelling across the Northam Bridge and through the industrial area on their journey to and from school.

The nearest houses on the Northam side of the river are a 0.7 mile walk away. The trip across the Northam Bridge is very unpleasant in wintry conditions, there is no shelter at all from the wind, the rain or the cold. One of us had the misfortune of being caught in a squally shower on the bridge with my child in January and we were soaked and shivering with cold within a minute. The footpaths on either side of the bridge are shared with cyclists and are bounded by a busy dual carriageway on one side and the river on the other.

We can't imagine many parents would choose to walk a four year old child across the bridge in the winter months and doubt many more would walk during the summer. Whilst it's possible that one or two may use a bus to cross the bridge and get off at Rampart Road, they might cycle or scoot in the summer but they'll still have to negotiate the hazards of the industrial area, the chances are that most of these extra children will be travelling to school by car. That seems to be in contradiction to the emphasis placed on sustainable travel in the school organisation guidance

If the school were to expand by 30 pupils, then there would be 30 additional journeys being made at 15:20 as the after school clubs are already full. A significant proportion of these journeys would be made by car. There are already more than twice as many cars arriving in Quayside Road as there are reasonable places to park, an additional 20-30 cars would lead to far more competition for parking near to the gates, more obstructive and unreasonable parking, more likelihood of lost tempers and aggressive behaviour. This area will become significantly more hazardous to pedestrians, especially children. Some drivers will choose to park further away on Quayside Road or Rampart Road but they and their children will then need to walk through the hazardous

	<p>section of Quayside Road with the HGVs and over-saturated parking. There is no doubt that the extra pupils will cause more hazardous situations to arise and that they themselves are likely to be exposed to more of that risk.</p> <p><u>By choosing to expand Bitterne Manor Primary school under these circumstances, you will be exposing children to a greater risk of injury on their journeys to and from school and you will be making it far less likely that the extra children accommodated in the 2015/16 intake will be able to choose to travel in a safe and sustainable way.</u></p> <p>Considering the unusual location of Bitterne Manor and the hazards on the journey between the proposed pupils and the school, we feel it would be far more prudent to find the extra accommodation for these children in a school that is closer to them, or one that wouldn't require them to travel across a ¼ mile long bridge in all weathers and through an industrial area frequented by HGVs. We already have regular near-misses between vehicles and children near our school, please don't make a decision which could result in a child being injured or worse still, killed.</p>
28/02/2014	<p>I am a serving governor for Bitterne Manor Primary School.</p> <p>I would like to put in writing my objections to SCCouncil current proposal to place another 30 children in the school.</p> <p>OBJECTION :- Letter Objections Governors Not fundamental part of Decision in direct conflict with</p> <p>“STATUTORY INSTRUMENTS 2013 No. 3110 EDUCATION, ENGLAND</p> <p>The School Organisation (Prescribed Alterations to Maintained Schools) (England) Regulations 2013”</p> <p>When SCCouncil Makes the statement that the enlargement of the school intake does not need to adhere to a statutory process. I presume SCCouncil is relying on the below regulation guidance.</p> <p>“4. An expansion without a physical enlargement to the premises of the school does not require a statutory proposal. Increases in pupil numbers may be achieved through an increase in the Published Admission Number under the School Admissions Code. “</p> <p style="text-align: right;">REF : School Organisation Maintained Schools Guidance for proposers and decision-makers January 2014. Department of Education Annex A: Further information for proposers</p> <p style="text-align: right;">Annex A.1: Prescribed Alterations Expansion (enlargement to premises) Page 3</p> <p>I would like to ask if SCCouncil also taking Note of Very first page of text in this document called the summary Page 2.</p> <p>This Clearly states the key objectives of the underlying statute this documents is created to give guidance on.</p> <p>I would like to ask if SCCouncil to please demonstrate how they are supporting BMPSchool Governing Body to “allow schools to have more control when making decisions about their size”?</p> <p>“The regulations support the government’s aim of increasing school</p>

	<p>autonomy and reducing bureaucracy. They allow schools to have more control when making decisions about their size and composition and therefore enable them to be more responsive to the needs of parents and local communities.”</p> <p style="text-align: right;">REF : School Organisation Maintained Schools Guidance for proposers and decision-makers January 2014. Department of Education Chapter 1 : Summary About this guidance Paragraph 3 Page 3</p> <p>BMSchool is a superb and successful school. This is a testament to the Head teacher, the current teaching staff, the governing body and the pupils.</p>
28/02/2014	<p>Ref: <u>I am concerned about the proposal to expand the pupil numbers at Bitterne Manor Primary School , Southampton in 2015/16</u> I am a serving governor for Bitterne Manor Primary School.</p> <p>I would like to put in writing my objections to SCCouncil current proposal to place another 30 children in the school. OBJECTION :- Funding, Public money should not be spent on reducing facilities for children SCCOUNCIL proposal to spend up to £50,000 on reducing current facilities for every one of the 210 existing pupils. This is Not good Value for money, no matter how you define it. This proposal is in direct conflict with guidelines on spending public money Once and sustainably use not just for the short term. The seemingly cheap new 30 school places are cheap on capital outlay only for SCC. Taking the loss of currently good facilities in the school the final hidden cost is much greater. “6.3 Principles Underpinning Expansion in the Schools Sector In selecting which schools to expand and the means by which this is achieved, the Local Authority has to consider a number of factors. Whilst all decisions to expand are taken in partnership with the schools concerned, the key principles underpinning any such decision are as follows:</p> <ul style="list-style-type: none"> <input type="checkbox"/> Demand <input type="checkbox"/> Feasibility (Cost) <input type="checkbox"/> Feasibility (Site) <input type="checkbox"/> Value for Money” <p style="text-align: right;">REF : School Organisation Plan Southampton City Council 2013-2022 Paragraph 6.3 Page 17</p> <p>Being a governor at BMPSchool I cannot approve of spending up to £50,000 of public money resulting reduced facilities for all year R, Key stage 1 and Key stage 2 children at BMPSchool. BMSchool is a superb and successful school. This is a testament to the Head teacher, the current teaching staff, the governing body and the pupils.</p>
28/02/2014	<p>I am writing to express my opposition to the proposed expansion of Bitterne Manor Primary School in 2015 and for the following seven years by the increase in the 2015 entry year group from 30 to 60 pupils. The reasons I am opposed to this expansion are outlined below. My concerns are written as a parent, for the wellbeing and safety, and for the quality of education of children at BMPS, both now and in the future. For</p>

	<p>these reasons I am writing, as I believe such a proposal is to the detriment of all pupils and the wellbeing, safety and resources available for the education of our children are at risk. I trust that these points will be taken into account when the council makes its decision.</p> <ol style="list-style-type: none"> 1. The proposal has not been given enough funding to support the children and the school for the full seven years through which BMP will be affected by this increase. As far as I am aware (from the little information we as parents have been given), funding has been allocated to make the changes and provide resources for a new year R classroom. The resources will be needed for a full seven years of 60 children and these resources change every year. 2. The safety of the children attending the school has not been given full consideration. There has been much discussion of a risk assessment and whether a risk assessment exists for this purpose or not. There is no such thing as a generic risk assessment, all we ask is that one be carried out and it has not. The council have not thought through the proposal to add a further 30 children (likely many from out of catchment) and the effect this may have on the safety of all children attending BMP. There are already considerable risks at school pick-up and school drop-off times with a lot of traffic from parents and the industrial units around the school. We would like to see some effort made before agreeing to this proposal to assess these risks, and to consider how they may increase with the addition of perhaps 20 cars at peak times. 3. Ofsted require consultation with parents of 'wrap-around' care. No such consultation has taken place with parents. By removing the music room the council are removing the options that parents have for wrap-around care, which the school currently does not provide, and has not consulted with parents on. 4. The proposal is short-sighted, dealing with a bulge year in the city centre when the need for more city centre schools is likely given the increase in population in these areas. It is clear that this proposal is a cheapest option to deal with a problem in the short term. Having already expanded all the available city centre schools, I am surprised that the council believe this will be a satisfactory answer and I wonder how robust their analyses of the city population increases and demographics are. I think decisions as important as this need to be backed up by reliable and robust analyses of longer term data. There must be some information that will provide prediction of birth rates in the city based on migration and the current demographic. 5. There will be ongoing issues with the sibling rule affecting access to a local school meaning that local children may have to go to other schools out of their catchment area. This is both unfair and short sighted, continuing the problem of travel to school and the risks associated with such as mentioned in point 2.
28/02/2014	<p><u>Ref: I am concerned about the proposal to expand the pupil numbers at Bitterne Manor Primary School , Southampton in 2015/16</u></p> <p>I am a serving governor for Bitterne Manor Primary School.</p> <p>I would like to put in writing my objections to SSCouncil current proposal to place another 30 children in the school.</p> <p>OBJECTION :- Governors support and Responsibilities (24/2/2014-09:00) SSCouncil Proposal as put to BMPSchool governing body is in its proposal phase. This phase ends on the last day February 2014. This is in 4 days time.</p> <p>As a Governor I have personally attended 7 meetings with SSCOUNCIL over the past 4 months. My primary aim was to clarify the details of the proposal. Details for Physical infrastructure of the school. Regard to SSC proposals for increasing intake 2015/16.</p>

Legally to cover the governing bodies requirements for Staff and child safety. Including SEN children's well being in the school.
 Impact on BMSchool budget and resources.
 To have a physical design along with known costing and agreed funding would be in line with what is expected from SSCouncil.
 There are no written proposals or agreement on any of the above.
 In short, there is no solid proposal at all.
 I feel SSCOUNCIL have fallen far short of the recognised clarity of procedural planning and consultation regarding BMPSchool 2015/16 expansion.
Being a governor of BMPSchool I cannot approve of a proposal which has no fixed definition or detail.
I Object strongly to SSCouncils putting BMPSchool governing body in this position.
 I can state as fact, the current Governors of BMPSchool, cannot answer the first two questions below. We have a duty to be able to in this document!
 More importantly these are very practical Questions with very real implications for the education of all the current 210 children of BMPSchool
 I would like to ask if SSCouncil were is the proposed detailed plan to go with their consultation framework which ends 28-Feb-2014.
 The lack of any finalised, costed and funded proposal from SSCouncil before deadline for consultation. Currently prevent a Maintained school Governing Body carrying its duty in assessment of the proposal.
 "2. Before making any changes governing bodies should ensure that:
 they have secured any necessary capital funding;
 they have identified suitable accommodation and sites;
 they have secured planning permission and/or agreement on the transfer of land where necessary2;
 they have the consent of the site trustees or, other land owner where the land is not owned by the governing body;
 they have the consent of the relevant religious authority (as required); and
 the admissions authority is content for the published admissions number (PAN) to be changed where this forms part of expansion plans, in accordance with the School Admissions Code."

**REF : School
 Organisation Maintained Schools
 Guidance for proposers
 and decision-makers
 January 2014.
 Department of Education
 Chapter 2: Significant
 changes: expansion, age
 range changes and adding
 boarding provision
 Governing Bodies
 Item 2
 Page 6**

BMSchool is a superb and successful school. This is a testament to the Head teacher, the current teaching staff, the governing body and the pupils.

Ref: I am concerned about the proposal to expand the pupil numbers at Bitterne Manor Primary School , Southampton in 2015/16

My children that will be affected are
 Sally Sear aged 3
 Henry Sear Age 5
 Ellen Sear Age 7
 I am a serving governor for Bitterne Manor Primary School.

I would like to put in writing my objections to SSCouncil current proposal to

	<p>place another 30 children in the school.</p> <p>OBJECTION :- Loss of the music room as a specialised teaching resource. Reducing the Facilities in the School namely the loss of the music room as the 'only' class size available teaching space that is not fully timetabled. So reducing the schools flexibility for everyday use for children's education. Instruments are expensive, large bulky items. The storage of these will now have to take up another part of the school used currently for other essential school activities.</p> <p>Why is SSCOUNCIL proposes to remove the music room from BMPSchool when other primary schools in Southampton are keeping theirs?</p> <p>In this one action the schools facilities are cut to bare essentials for core subjects only.</p> <p>The hall timetable is very full. Only 2 sessions currently not full on the timetable. These will be needed for Physical Education if the extra 30 children are admitted.</p> <p>Leaving the school with no free area for all the existing Music lessons, Booster Pupil tuition, Staff meetings, Governor meetings, Parent Teacher Association meetings. Which constitute the current use of the music room. BMSchool is a superb and successful school. This is a testament to the Head teacher, the current teaching staff, the governing body and the pupils.</p>
28/02/2014	<p>I've read the proposals for increasing school places.</p> <p>The proposals for educating the year R children in the future are based on a large number of children moving to locations across the city away from where they live. Additional this burden falls mainly on the poorest families in the centre of town. This will increasingly disadvantage these children further with increased travel time and making family involvement less likely.</p> <p>Can further consideration be given to schooling these young children locally to where they live? What further options have you reviewed for the children in the central location, particularly those living in the centre of Town?</p>
28/02/2014	<p>I am writing regarding the discussions with Portswood Primary School about increasing their Pupil Admission Numbers.</p> <p>Your notice indicates proposals for four schools to increase their admission numbers for one year only in 2015, and separately advises that discussions are ongoing with Portswood School. It is unclear whether the discussions with Portswood are also for an increase in numbers for 2015 only or whether this would be a permanent increase in admission numbers. I am a local resident and whilst I appreciate the pressure on finding school places, I am concerned about the impact increasing numbers at Portswood School by a whole class size would have for the following reasons:</p> <p>Space within the school. Neighbouring houses in Somerset Road had to be compulsorily purchased to create extra space for the school when the admission age was lowered from 5 to 4 years old. If the admission numbers are permanently increased extra classrooms would be required, (ultimately 7 extra allowing one for each Year group) which would necessitate building on the existing playground reducing the already confined and limited free play space. This reduced play area would have to accommodate extra children; potentially 210 at an additional 30 per year group, which would raise health and safety issues at play and lunchtimes.</p> <p>There is no room to expand the school for a permanent increase in admission numbers without further compulsory purchase of family homes, which are already in short supply in this area.</p> <p>Whilst appreciating the need to increase pupil places across the city, surely the extra places should be created in schools where there is a greater demand for places. Viewing the latest; 2011, published statistics for the Portswood Ward, the age group with the highest number of children was Age 1, with 149, compared with 124 aged 5, who presumably were already in</p>

	<p>education. Given that this data includes children in homes in other school catchment areas, I would question the need to increase the intake at Portswood by 50%, especially given the detrimental impact of reduced space for the pupils.</p> <p>It is evident by the amount of cars at school pick up and drop off time that many children are currently being driven to school. Indeed, I understand that following complaints by the school itself, the Council has asked a school travel officer to investigate the problems a number of parents who drive and park inconsiderately at these times are currently causing. I would therefore suggest that a number of children already at the school are from outside the catchment area and are being driven to school because of the travelling distance involved in getting there. This implies that the demand for places is not in the Portswood School catchment area, but in other areas of the City. Increasing the admission numbers by 50% will exacerbate this problem and cause increased congestion and parking problems in an area that already suffers due to the number of HMOs and the proximity to the University. I trust my views will be taken into account in your consultations with Portswood Primary School.</p>
28/02/2014	<p>I am concerned about the proposal to expand the pupil numbers at Bitterne Manor Primary School, Southampton in 2015/16</p> <p>I am a parent of children at the school as well as a local and national voter.</p> <p>My children that will be affected are Sally, Henry and Ellen Sear aged 3, 5 and 7.</p> <p>I have been a volunteer helper at the school, working with children, hearing them read and supporting in other aspects of the curriculum. This costs the school nothing but gives children with identified needs a specific boost in their education.</p> <p>At present the single [central corridor] of the school is crowded. When teaching assistants conduct lessons with small groups outside each classroom, the corridor becomes busy and the noise level increases. It is often difficult to find a suitable space for me and a single child to work in. I think the changes you propose will reduce the space in the central corridor currently used for 1 to 1 help for all of the current 210 children at the school for the next 7 years.</p> <p>The same is true for the Teaching Assistant led focus lessons. How can this be good for the Children's Education? Have you taken this into account in the plans being proposed?</p>
27/02/2014	<p>Thanks for the reply.</p> <p>The whole point about a risk assessment, as I have explained before, is that the organisation running it defines it. The council knows full well that there is NOT a predefined risk assessment for ANY organisation.</p> <p>The H&S website simply provides templates for many situations.</p> <p>I am outside the school today and have seen two near misses involving children. Further, there was an RTA directly outside the school before Christmas. The police did attend. Your information is incorrect.</p> <p>It is clear that the council have no intention of assessing the impact of the increase in numbers on the health and safety of the children at the school. I am most disappointed in and ashamed of my city.</p>
27/02/2014	<p>We write to pass on our concerns to you during the consultation period for the above proposal, and request that they be forwarded with others to Southampton's cabinet.</p>

We primarily write, as parents of two children who currently attend, and one who has recently left the above school which has resulted in our involvement with the school extending over the last eight years (ten years if one also includes our involvement with the onsite Bitterne Manor Preschool) However, we both feel passionately about the welfare of children and young people through our careers, one in education the other in child and adolescent mental health. We have, ourselves, benefited from an excellent State education during the nineteen-seventies and eighties and aspire that our children will at least do the same. We are very happy with the education our children and their peers are currently receiving at Bitterne Manor Primary school, rated as a "good school with outstanding features" by Ofsted, and together with the staff and other parents we wish to see this continue and improve. We hope that any decision to change the dynamics of this successful formula is taken with gravity and due care and consideration both in prior research and appropriate funding.

Prior to writing, we have attended the public meeting on 28th January, put forward in advance questions for that meeting, and read the minutes and the subsequent council replies to questions raised at that meeting. We are also party to the history of the development of the current plans as they were negotiated between the school's Senior Management/Governing Body and representatives of Southampton City Council.

Firstly, we understand that Southampton City Council has predicted from birth statistics, that there will be an increase in the number of admission age children in the Central and East of the city in 2015/16, but that with only 4 years of birth statistics data available, the numbers of admission age children are expected to drop down again. We have been told by the council that this doesn't take into account any other changes in population such as immigration which has increased and is continuing to increase into the area. Thus together with the city councils limited financial budget for expansion or building of new schools, the belief that the population is not increasing over the medium to long term is driving this as a *temporary* expansion only. It is the temporary nature (the low funding this attracts) and then the return to current admission numbers and the ramifications of this, which causes us concern. Adding to this the fact that the increased numbers of children will come largely from out of the schools catchment area, poses issues of travel distance and the safety of travel between home and school for the out of catchment children and future siblings.

We will consider each of our concerns in turn:

1 The effect this temporary expansion will have on subsequent admissions to the school over the following ten years or so.

We know Bitterne Manor with an intake of 30 each year is already an oversubscribed school. Already there are instances of catchment area children failing to get a place at the school. Already children with siblings currently at the school in some instances fail to get a place at the same school as their sibling, even with the sibling rule in their favour. We also know that there is a government directive to only expand successful schools with waiting lists, so Bitterne Manor is a good candidate. It makes sense so those who currently would struggle to get a place at this, their catchment school, close to where they live and in many instances within walking distance, now get a place and those families can get all their children into the same school. But this directive only makes sense and is beneficial if it is a *permanent* expansion. Expanding temporarily and then contracting again over the following years means more siblings many from out of catchment, all competing for 30 spaces each year and getting in line behind them are those

first born children in catchment who will struggle even more to get a place at Bitterne Manor, a short and safe travel distance from their homes. A domino effect ensues with local children then travelling greater distances to find a school with places.

We have been told following the public meeting, that an extra 30 children attract 1-4 extra year R pupils in any one year under the sibling rule. Unfortunately, we were not told how many children currently on average get in under the sibling rule. If it is 1-4 year R admissions per 30 children, then with 6 year groups of 30 that's currently 6-24 places, so the extra 1-4 coming in from the temporary expansion could mean that 7 to 28 year R places could be taken up under sibling criteria in subsequent year R admissions following this "bulge". Potentially filling the 30 place class, effectively blocking access to new local families. When this becomes an acute problem it cannot be remedied because we have been told by Oliver Gill that the school site is too small for a permanent expansion.

We have also been told SCC is only legally obliged to find a school place for every child irrespective of whether it is in the child's local area or not but surely it would make more sense to reduce travel distance and the risk of travel to the child by placing them in schools where they live. If one considers the effect the temporary expansion will have on future admissions, more and more children are going to be travelling greater distances from their homes to school.

Oliver Gill was asked at the public meeting why other schools with empty classrooms in the catchment areas where the increased child numbers are coming from aren't being used. We were told that any classrooms that are currently empty (and they do exist) will "likely" fill up as children progress through year groups. Also that building a new school to meet the needs of these increased child numbers in their local area is not an option, because there is no current statistical birth rate evidence to suggest a permanent population increase (again not taking into account immigration).

2. The impact a temporary expansion will have on education at the school:

The yearly allocation of teachers to year groups:

As current school parents this obviously greatly concerns us. We have observed that as such a small school with currently 7 class teachers, the yearly reshuffle allows each teacher to stay teaching a particular year group for at least two years, building experience and expertise with that year before moving to a different year. In fact it has been our observation that around 50% of the teachers have taught the same year for 3 consecutive years. With only one new member of teaching staff. How will this previously successful formula change as the doubled year group moves up the school? Two teachers every year required to teach a double year group that won't exist the following year? The permutations of dividing this staff allocation between only 8 individuals, even with skill, are likely to only allow each teacher to stay with the same year group for 2 years.

This question was asked at the public meeting but hasn't been answered. Oliver Gill was to research how other schools have managed this, bearing in mind larger schools will have had more flexibility with greater numbers of teaching staff to rotate in the first place. We have only been told that "the school standards team do not believe that the proposal will have a negative impact upon the quality of education at the school" We have only heard how "the leadership team will recruit the best person for the post", which wasn't even in question at the public meeting and is taken as read.

The Music Curriculum:

Many questions were asked about the effects on changes to the teaching of music at the school. Largely because the school is being targeted for temporary expansion as a result of its non-core teaching space "the music room" (which in reality is used for many additional activities other than music and storage e.g. for extracurricular activities during and after school). Following the public meeting we were advised that Southampton music services will still be continuing music lessons at the school which is reassuring. What concerns us however is the impact on the choice of instrument offered, particularly for the whole year group lessons in year 3. One of our sons was offered flute or oboe in year 3. Two years later our next child's class all got to try a guitar each (our son continues with guitar as a result). This year our youngest son's group have a small recorder that is mentioned in the council's reply to the concerns at the public meeting: "One year group receives whole group recorder lessons and given the small size of this instrument, storage of these should not prove problematic if whole class lessons continue". This reply concerns me as it suggests that it has been the practice that year 3 only ever play the recorder. This is not the case. We are not aware that the whole class lessons are, from now on, being restricted to small easily storable recorders. This is a change to the curriculum which reduces the variety of musical education available to the children of Bitterne Manor. I would like the council to be aware that previously the size of instrument has not dictated what musical education our children received in year 3 and this should not change after the expansion. For example we have been invited to whole class year 3 recitals of the guitar, and flute/oboe in previous years. If from now on the children only get to try the recorder because SCC have failed to provide previously available instrument storage then the standard of their education in music *is* being affected by the expansion.

The appropriate financial resourcing of the extra year group de novo as it progresses up the school:

Again this was asked at the public meeting and we feel not yet addressed or adequately answered. So far as we understand it, there is an agreement to furnish the extra classroom which will hold an extra 30 children. This money being made available at the outset. We have also been told that "the majority of schools budget is closely linked to the number of pupils at the school. If there are more pupils at the school, the school would have a larger budget to cover the costs of extra teaching staff and resources". What concerns us and the other parents at the public meeting and we don't believe has really been taken on-board, is that this is no ordinary progression of a year group up a school, making use of equipment and resources that have been paid for, provided and handed down from previous years. This year group will need extra resources every year that aren't already in existence at the school e.g. books, IT, topic resources. The school has currently only sufficient of these resources for 30 children per year. Even a set of larger classroom furniture will be required as they get older and bigger. We are fairly sure that the ordinary increase in a school's budget linked to the number of pupils is not set to provide a brand new set of resources for that pupil for every year they are there.

When *permanent* school expansion occurred recently in Central Southampton, Bassett Green were given 1.4 million, St Johns 2.1 million and Bevois Town 1.45 million. A funding investment of approx £3500 per new pupil in the Central catchment area. Our new pupils will come from the same catchment area but even under current proposed financial funding (an improvement on the original proposal), our new pupils from the same area will have something in the region of £300 invested in them to attend our school. To appropriately fund this year as it moves up, we feel extra *adequate* resource funding is required over and above that which is routinely set per pupil in a school's budget. If this does not happen the money will have to

come from the schools budget (set for 240 children in a fully equipped status quo) and this will inevitably take away from spending on resources and opportunities for all the other children. *We feel that it is imperative that if this proposal goes ahead it is funded in such a way so as not to take away the current good level of resources and facilities for the current and future children.*

The 3 issues above we feel are most important to maintaining education at the school as we now enjoy it. We also are concerned about overcrowding in the already noisy central thoroughfare of the school which is currently used simultaneously for small group teaching currently by adjacent classes. We also feel saddened that the family events which make Bitterne Manor such a friendly "whole school" community will inevitably have to change as the school hall, whilst it might meet size regulations for 240 children, will not have capacity to invite parents to a whole school event such as the Christmas show which our family has enjoyed over the last 8 years. Having 3 children in a primary school and being able to see them all perform *together* in a school show has been a very important part of our family experience. This will not be possible after the expansion. We would predict capacity will dictate separation of such events into KS1 and KS2.

3. Travel distance from school: safety of travel to and from school and "human traffic" in the school grounds.

We have been helpfully informed by a parent governor that previous government directives have recommended that councils take into account travel distance between home and school and the safety of that travel.

Many parents and local residents are already concerned about both the current levels of traffic and risk to children outside the school and how this will increase during the 7 year expansion. We recognize Bitterne Manor is not unique in being sited in a cul de sac, and that whilst it is busy other schools are also busy at peak times. The council recognize that an expansion is likely to result in an increase in traffic levels of at least another 6-7 cars, but has no way of predicting how many over and above this will result from the expansion largely coming from "out of catchment" i.e. Central Southampton. The council hopes that these new pupils' families, travelling longer distances to school, will be willing to sign up to the SCC Travel Plan. Our own children walk to school, along an off-road cut way and the quiet part of the cul de sac. They have one single lane road to cross in front of the school. Some of their friend's cycle or scooter the same route. We are very lucky we live in catchment.

Children and families in the expansion coming from central Southampton will walk along a busy dual carriageway in rush-hour and enter Quayside Road on the side of the industrial estate, where the pavement is more open driveway than footpath and contend with the arrival and parking of heavy goods vehicle traffic on their walk to school. I personally think it is very unlikely that if a car is available, any of these families will choose to walk this hazardous route. This is not a safe walk to school for young children. I would also say that currently on road parking in Quayside Rd is already taken up before and after school so parking a little further away is not an easily available option.

An issue which wasn't raised in the public meeting is actually an onsite issue and involves "human traffic" on the pathways and front of the school. The majority of the school frontage is taken up by its own car park and the large Mosaic sculpture, which is effectively a no-go area safety wise. This area has been a health and safety risk for years and is recognized by the school as

	<p>such. One of our own children received a minor head injury from a trip on it as a preschooler. This leaves two narrow pedestrian pathways up to the front of the school, which are already overcrowded at the beginning and end of the school day, made worse by scooters, bikes and prams all trying to pass on a narrow single-file passage. Recently our youngest son attempted to pass others on this path trying to get to school on time. The path being too narrow, he had to pass onto the mosaic which was lying in water in places. He tripped and lacerated his knee and was soaked to the skin. There will be an extra 30 children, carers and younger siblings on these narrow paths at the beginning and end of the day. Given that there is a recognized risk already from the mosaic we would predict that increased footfall will compound this problem further.</p> <p>To conclude, we ask that the Southampton Cabinet take seriously our own and other parents concerns about the impact of a temporary expansion on future access to the school for local children, on the organisation of the small numbers of teaching staff, the variety of the music curriculum, the adequate yearly resourcing of the new class and the impact of travel distance and safety of that travel between home and school. Most importantly if the expansion goes ahead that it is <i>properly</i> funded beyond the building alterations, so that the current good level of educational facilities and resources are maintained for the existing children and not diluted or drained by the need for the school to spread the budget to continually <i>re-resource</i> a new year group for 7 years.</p>
26/02/2014	<p>I am writing to express my opinion about the proposed plans to expand four primary schools in the city.</p> <p>As far as I can see from reading the School Organisation Plan the biggest need for reception class places is in the city centre - not Bitterne Manor, Bitterne Park, Mansbridge or Thornhill.</p> <p>What alternatives have you considered for greater provision on the city centre?</p>
26/02/2014	<p>I am writing to you concerning the proposals for the 2015/16 intake. I have worked as a Primary Class Teacher in the city centre for the last 5 years. I have become aware of the proposals for the coming few years and I am slightly concerned that the proposed class increases are being targeted in the wrong part of the city.</p> <p>It appears that there is indeed a shortage of 180 places across the city, but that the majority of those places (119) are actually in the Bargate Ward, and not in fact in places like Thornhill, Bitterne Park or Mansbridge. It would therefore seem more logical to provide places for these children in the city centre rather than these other areas. Having worked closely with families in the city centre, I am also aware that a vast number of these families would not have the transport or means to travel to schools in these types of areas. Their need would be met far better if there were school facilities within close proximity to the city centre.</p> <p>Thank you for taking the time to read this. I am sure that we are all working to improve the lives of children across our wonderful city and I look forward to seeing how you go about doing this.</p>
26/02/2014	<p>I have read the proposal to expand school places in the city and the School Organisation Plan published in November. The planned provision does not provide school places in all the areas of the city where there is an expected increase in demand.</p> <p>As founder of the CLEAR project working in SO14 I am particularly concerned</p>

	<p>about some of the families we work with and the availability of school places in close walking distance. It is already an area of concern and with no expansion in the Bargate ward, I can see their position worsening.</p> <p>I will be exploring, open-handedly, the demand locally for a Free School in SO14 that will better serve city centre families.</p> <p>The proposal for a new free school will be openly made available in the Echo this week.</p> <p>I am very happy to talk about how this could fit within the city's plans.</p>
26/02/2014	<p>I have been reading the information about the proposed entry numbers for 2015/16 for primary schools within Southampton City. I am a parent and teacher myself and am wondering if there is any way that there is a scheme that would not affect the schools in the proposal?</p> <p>Bitterne Park Primary (I use as an example as I know it well) already has a large number of pupils, and an additional 30 to take on in one year will make this school significantly different to what it is now, and not necessarily for the better.</p> <p>Have you considered the impact that this will have on parents and children who live in Woolston, Shirley, Thornhill etc? Many of them do not have transport to travel further than their local community area, and some would have to cross the Itchen Bridge which is no easy task during the school run - even if you do have a car!</p> <p>I'd be interested to hear what alternative plans there are to ensure all children are given a fair and equal opportunity for their education, rather than just adding on to what are already full and difficult to manage schools. Have there been any considerations of opening a new school within the catchment area, which would then allow for all pupils in the community to attend easily? This would also provide more job opportunities in the area, which surely can only be a good thing!</p> <p>Thank you for taking the time to read my comments, and I look forward to a response or more information about other possibilities.</p>
26/02/2014	<p>The proposal to expand four, possibly five, primary schools in Bitterne Manor, Bitterne Park, Thornhill, Mansbridge and Portswood seems rather strange to me given that the majority of places required for reception children are in the city centre.</p> <p>What arrangements have you considered for transport for families from the city centre to enable to get to these schools safely?</p> <p>What alternatives have you considered for greater provision in the city centre?</p>
25/02/2014	<p>I am concerned about the Local Authority's response to many of the entirely reasonable concerns raised by parents of children at Bitterne Manor Primary School. The response is largely negative, with the focus on the minimum requirements for schools, such as space. The LA's viewpoint appears to be that, even with the expansion, BMPS still meets all the minimum requirements for education provision, so the LA has fulfilled its obligations. I cite some examples below:</p> <p>Addressing parents concern over the use of the school hall, the LA's response is:</p> <p>"By way of comparison, Wordsworth Primary (which will eventually have up to 630 pupils) has a hall of 152m². Even with the additional pupils, Bitterne</p>

	<p>Manor would better off, in terms of relative communal space, than many other schools in the city.”</p> <p>Addressing the removal of the small music room, the LA’s response is: “There are very few primary schools in the city that have a dedicated music teaching space” [Surely this is not something to highlight!]</p> <p>And</p> <p>“Our data shows that the proposed classroom 51m², which is adequate for a classroom. There are other schools in the city have smaller classrooms than this.”</p> <p>Addressing the traffic problems outside the school, the LA’s response is: “For example, Bevois Town Primary on Cedar Road currently has 257 pupils (and will eventually have 420); is located on a non through road; and has significantly less on road parking than Quayside Road.”</p> <p>I am sorry that the LA seems to believe that to address parents’ concerns, the appropriate response is to find an example of another school which is worse off, or to check that we meet the minimum requirements. There should be some positivity and aspiration in Southampton to create and maintain the schools with more excellent facilities.</p> <p>The parents are rightly concerned about the proposed change. It would disrupt any school. BMPS will lose a valuable resource in the Music room (which is unlikely to ever return to this use, and is used for other activities not limited to music lessons). I am sure that the teachers will do a sterling job to minimise the disruption and to maintain BMPS as a welcoming and highly valued local primary school. I would like to see the LA aiming higher. Southampton’s schools should not be content with attaining the minimum. A key to success is to aim high, and then, even if we do not attain all our aspirations, we will still be well above the minimum threshold.</p> <p>Returning to BMPS, please do not just see a room not utilised as a year group’s classroom, and take what appears to be the easiest option.</p>
<p>22/02/2014 & 24/02/2014</p>	<p>Thank you for informing me of the details.</p> <p>I am reassured to hear that you have taken the necessary steps to accommodate additional school children.</p> <p>I believe the extra places are for Year R children. What will be the impact on the other Years classes (Year 1 and above) in the coming years?</p> <p>I read that you are proposing to increase the Published Admission Number (PAN) of some primary schools in the city. The information was made available at the following link: http://www.southampton.gov.uk/learning/applyingforaschool/consultation/ If I understand this proposal correctly, it is proposed to increase the number of places available for Year school children.</p> <p>What I do not know is if this increase will be matched by an increase in the number of teachers. Also, this increase will require additional space to accommodate additional children.</p> <p>It is not clear to me if and how these points are being addressed by the council.</p> <p>Could you please clarify?</p>
<p>23/02/2014</p>	<p>I am a resident of Quayside Road and am not happy at the proposal for an increase in the number of pupils attending the school. I am appalled at the attitude of Oliver Gill - which suggests that he has no regard for the views or</p>

	<p>well being of the local residents. Is this just his view or is it the attitude of Southampton City Council in general?</p> <p>The traffic disruption caused by parents transporting their children to and from the school is significant and the attitude of a number of parents is unacceptable. On occasions I have been sworn at or otherwise abused when I have asked parents not to obstruct access or egress from my house. These parents have no regard for other road users and attempt to force their way through the traffic regardless of whose right of way it is.</p> <p>A visit by Oliver Gill at school start or close times will show how parents park on double yellow lines and in Private parking areas. Perhaps he should speak to the police - who have on occasions been in attendance to deal with the situation. Perhaps Mr Gill would do the residents the courtesy of arranging a meeting with them to hear their views and concerns? Which must also impact on the safety of the children who have to work their way through illegally parked cars.</p> <p>The school in general enjoys the goodwill and support of the majority of the residents but an increase in pupil numbers and attendant difficulties could seriously damage that.</p> <p>If the numbers increase perhaps the school should deploy staff to manage the traffic issues and support the residents? Maybe parents wouldn't treat the staff in the same manner they do local residents?</p> <p>It seems this proposal has not been well thought through or researched and only at a late stage have the residents been consulted.</p> <p>By way of this response I am requesting that our local councillors engage with this process and support the views of their constituents.</p>
20/02/2014	<p>Now that the consultation period is drawing to a close, attention turns to the Cabinet Meeting in March.</p> <p>Can you confirm that, as per point 1 in James Howells email to me on 20/12/13 below, all submissions will be included in the report and that this will be able to be evidenced on request.</p> <p>Many thanks for a swift response.</p>
19/02/2014	<p>Our child will be affected by this surge in 2015/2016 on entry into primary school at Portswood.</p> <p>I am VERY concerned that there will be a 50% increase, will there be capacity/staff/premises for this?</p> <p>Why has Highfield not been adjusted?</p> <p>Is this a national problem? Or what it just a high birth rate in 2010/2011?</p> <p>Would you recruit an extra teacher for 1 year only? Will that teacher then move along with the "Bulge" in that year throughout their primary school?</p> <p>How does Portswood's head teacher feel about this?</p> <p>Is there going to be a public consultation?</p> <p>Will the catchment area be enlarged?</p>

14/02/2014

I am writing as a parent, an ex-governor at the school, and a member of the community of Bitterne Manor Primary School, to provide you with my views of the above proposal. I understand the reasons for the proposal, and as a citizen of the city I can see that all children who will be school-age in 2015 must have a place at a school within the city. BMPS is an excellent school and for that reason it could be a good place to make extra places for the seven years from 2015 to 2022.

However, my concerns all revolve around the impact on the school as a whole and the apparent lack of consideration of that issue by the LA. Having listened to Mr Howell and Mr Gill presenting their plans and arguments, I conclude that their priority is to place the extra class in 2015 regardless of the quality of the learning environment for those children and all other children within the school. Indeed, Mr Gill made this very statement to me as a governor last term; he told me that the quality of the educational environment for these children is not important to him, they just need to be in school. This attitude is exactly the kind of thinking that will reverse the recent improvement in educational standards across the city and it is my view that elected councillors should protect the children of Southampton from it.

The staff and governors of Bitterne Manor Primary School are perfectly capable of ensuring that an additional class in 2015 will receive the same outstanding education that the children of the school presently receive. However in order to do this, they will need the full support of the LA, and you as Councillors must ensure that they receive that. In the short term this boils down to one simple issue; properly resourcing the adaptations that are needed. Mr Gill stated that the LA will fund the minimum requirements for fitting out an Early Years classroom, toilets and outside space; that ensuring the additional classroom and facilities meets the highest standards that Ofsted expects in an Outstanding school was not necessary. In short, he is aiming for an environment that "Requires Improvement" in Ofsted terminology. This is absolutely not acceptable for any children in the city.

A further issue that the LA has been denying is the impact on the rest of the school in terms of the use of space within the school building. The school makes maximum use of its small and quirky spaces already; one-to-one lessons, nature groups, and care for children with special needs, including physical treatment and help with emotional and behavioural needs, are taken in corridors and small rooms, plus the music room. The library is already less than ideal; it is in a corridor and it not accessible for disabled children. The use of all of these spaces for small group and one-to-one lessons has been a key tool that has raised the standards achieved by the children of the school over the past 4 years. The loss of the music room as part of the flexible system for managing all these activities will impact on all children for **seven whole years**. The argument given to parents by Mr Gill and Mr Howell is that other schools within the city are worse off in terms of space; once again, their

	<p>willingness to race to the bottom in terms of quality of environment for our children in disappointing in the extreme. Other schools in the city have better spaces, but apparently this is not something for the LA to aspire to. We should all be fighting to make sure all children of the city have the best provision, not saying the worst provision is acceptable to all. It is my view that the LA must provide the resources to ensure that BMPS can continue to have enough physical space in the school to continue their highly successful work in improving standards.</p> <p>The LA also appear to be considering only short-term issues. There has been no satisfactory response to concerns about what happens after 2015. If the admissions policy remains the same, what will the impact be on families who have siblings of children in the two-class cohort? It is a reasonable assumption that for seven years after 2015, this school will be even more over-subscribed for in-catchment children than it is now. The LA seems to have no plans for this inevitable consequence of the 2015 cohort, and I don't think the proposal should be allowed to proceed until they do.</p> <p>Further evidence of the short-term thinking is that the requirements for the extra 30 children will be very different in 2022 than they will be in 2015. Mr Gill and Mr Howell have made it quite clear to parents that once the children are in the school, the need for extra basic equipment like larger chairs and desks, computers etc when they are older is not their concern. The school runs on a very tight budget (as do all schools) and resources to buy these very basic items will detract from the teaching budget. Once again, the whole school will be disadvantaged by this decision.</p> <p>Finally I would like to state that I do read the papers and I am well aware that the LA and the City Council are having to make very difficult decisions regarding their budgets, and that many services are now of poorer quality than they were before the cuts. I would argue, however, that none of us can afford to reduce the quality of our children's education and that the resources to implement this proposal successfully absolutely must be found. Mr Gove has enough money to spend on free schools including ones that have failed and ones that are not full; the Cabinet should fight to make sure the DfE provides the resources that are needed for all children.</p>
11/02/2014	<p>Thank you for your reply. My only concerns, solely as a parent, are the wellbeing, safety and education of children at BMPS, both now and in the future.</p> <p>Your response is very disappointing. I could take the time to explain, point by point, why, but two things persuade me not to.</p> <ol style="list-style-type: none"> 1. The proposal will be enacted regardless. This is because no alternatives have ever been considered. 2. James Howells has taken the positive step of contacting the H&SC. He is keeping me posted. By way of good communication, he is demonstrating a level of consideration that I have seen absent from anyone else connected to this project. I don't expect any fundamental changes as a result of his effort, but I can be persuaded that someone has taken my concerns, as described above, into account and tried to help deliver the best possible project. <p>The single point I will pick up from the below is the following:</p> <p>To be as clear as possible, there was no way Mr Gill's statement regarding having "googled" the requirement to perform a risk assessment regarding road safety for the children could have been misunderstood. Many other parents were also clear about his statement. It demonstrates a very poor value that he places on their wellbeing and safety. That you have not commented on it directly is very disappointing and inflames the point. As James is proving, clear communication is very helpful to all parties. I would be happy for us to clarify the situation between us at a meeting.</p>
11/02/2014	<p>Thank you for the updates and your efforts. Especially the interaction with the H&SE. It is much appreciated. I look forward to your assessment of their response</p>

10/02/2014

I am writing regarding the proposed expansion to BMPS. I am a parent of children who attend the school, and also as a resident of Quayside Road. My first concern is regarding the extra traffic that will be incurred with parents driving their children to school. I don't think that the guestimate of an extra 6 cars is accurate, especially as no-one can comment on whether the new pupils will be in the catchment area of the school. It is currently a nightmare and I can only assume it will get worse. I have seen parents driving whilst talking on their phones, one very nearly crashed as he wasn't paying attention. People park over driveways, and I have been asked to move from my own driveway entrance as a car wanted to turn around. One day a parent was obviously getting frustrated with the traffic and drove aggressively on the pavement whilst I was walking on it. I asked her to stay on the road, and her response was "people walk on the road , so why shouldn't she drive on the pavement". A lot of the cars are people carriers or 4x4 driven by women who are not able to safely drive large vehicles. Most days when I walk my children to school, I am having to avoid cars driving on the pavement, or parked blocking the pavement. It is so unsafe. I used to complain to the school, and they put the concerns in the school newsletter, but things do not improve. We have contacted the local PCSO's who say they can only stop people parking on the zigzags, and that we need to contact the council to deal with people parking on the double yellow lines.

I have read through the answers given after the school parents meeting. There was a recommendation for staff to park on the road, as the carpark is not big enough. Comments like this are just going to make matters worse between the school and local residents. If all staff decided to do this, then there would not be any availability for residents or visitors. Parents evening or school productions cause chaos in the evenings, as it seems that all parents drive to these events. this will be worse if the school numbers were to be increased.

I can't see that the additional pupils will be in catchment, which would mean that there would be more traffic and added risk. I have trouble getting to work in the mornings because of the school traffic. There is congestion at the road narrowing, outside the school, as people are trying to park as close to the school as they can. The traffic lights at the junction of Rampart Road are only set to green for a few seconds, and only a couple of cars can get out at a time. I am also a pet owner, and worry every day that someone will run over the cat, as usually the road is quiet, except for school pick up times.

I already think that the school is at capacity, and do not think that an increase in numbers would benefit the school. Year R children have a separate play area to the rest of the school, and this would not be big enough for 2 classes. So any changes that would have to be made would only be a temporary measure, which I feel is a waste of resources. The school puts on after school clubs, which soon get booked up. An extra class would mean more people would miss out on this opportunity.

If the increase has to go ahead then surely a better idea would be to move the preschool to another site rather than giving up the music room.

I hope my concerns are taken into account, especially regarding the added risk with parents driving to school.

Thank you for your timely response. I can only presume, from the tone of your email, that the views of residents are not going to have any impact on the outcome.

I am grateful that someone will be sending officers down to address the current traffic concerns. Things are generally at their worst on rainy days. Are you able to ask the highways dept to alter the time on the traffic lights during school times also?

The response sent to the school, after the parents meeting states that staff can park on the road. Maybe a follow-up email needs to be sent to the school

	<p>to clarify the parking issue. My reference to the after schools club was about limited spaces, which soon get filled, not rooms or teachers availability. It will be harder for children to attend clubs that have limited numbers, if there are another 30 children competing for space.</p> <p>I am presuming my other comments are valid and justified, as you haven't attempted to argue against them!</p>
10/02/2014	<p>Thank you for including me on your swift response to Councillor Lewzey.</p> <p>I am curious, however, as there was an RTA outside the school in December that was attended by the police. This would endear the below statement incorrect immediately.</p> <p>Also, parents would be reassured if advice Re. Risk assessments were sought for the Health and Safety Executive. They are most closely linked with such matters. This would help to mitigate the concern raised when Mr Gill mentioned that the Council had "googled" the requirement.</p>
03/02/2014	<p>Reading page 4 of the SCC School Organisation Plan that you have written and published, we can see that the birth rate for Southampton is projected to continue rising:</p> <p style="padding-left: 40px;">“The School Organisation Plan presents this data over the longest possible planning horizon (five years for primary and ten years for secondary) so that the Council, Schools and other key stakeholders are able to take well informed, long-term, strategic decisions, aimed at securing the best possible outcomes for current and future generations within the City. Primary level are likely to be required. In addition, we are also aware that as the expanded Year R cohorts flow through, we are likely to see a significant requirement to increase the number of Secondary School places on offer in the City.”</p> <p>Further:</p> <p style="padding-left: 40px;">“Beyond 2017/18 it is difficult to forecast likely demand, however even if 2012/13 levels (which is not the peak year of demand) are maintained, pressure on primary school places will remain constant.”</p> <p>And in 7.2 on page 19:</p> <p style="padding-left: 40px;">“To ensure reliability, these figures are cross checked with birth data provided by the Office for National Statistics (ONS). Furthermore, a fifth year of intake data is produced on the basis of the birth data, to provide a longer forecasting horizon.”</p> <p>This seems at odds with the statements made at the parents meeting on 28th January and further statements in the same document which state that the bulge in 2015/16 would then recede and the birth rate would be flat. There was no mention of the fifth year of intake data either.</p> <p>I am sure that this is a misunderstanding on my part. I only need to understand.</p> <p>Can you explain how those statements, which seem to conflict, are resolved please?</p>

24/01/2014	Has the LA paid due consideration to the risk assessment for additional traffic in the area at drop off / pick up time?
24/01/2014	<p>1. Temporary expansion's effect on subsequent admissions particularly accessibility of Bitterne Manor Primary to catchment area first born children (without siblings already at the school).</p> <p>We understand that the extra class is likely to be made up of children from central Southampton and outside the schools catchment area. This is likely to consist largely of young parents starting new families (after all entry next year to year R at Bitterne Manor is only likely to be taken up by these families for their first school age child...those with older children are likely to be already at another primary and so seek subsequent children to go there as well).</p> <p>So 30 probably first born children will enter year R at Bitterne Manor from outside catchment next year. They will join 30 other children made up of siblings of children already at school (both from within and outside catchment) and first born children from catchment.</p> <p>These 60 children will then be at the school for the next 7 years. Bearing in mind the "Sibling Rule" will give all these families priority admission for subsequent children. If these 60 families have more children entering school over the next 7 years and beyond, they will all be competing for 30 spaces. Where does this leave them and more importantly local catchment area families for the future?? (Those local couples planning families now or already with babies and toddlers?). They will stand in line behind all those who had their eldest children admitted in September 2014 and in all likelihood they won't get a place.</p> <p>We would be interested to know what percentage of year R places have gone to catchment area children, and in particular children in catchment without siblings already at school, for each of the last 5 years. Then we would be keen to learn of the Local Authorities views on how this is likely to change after Sept 2014 (bearing in mind there may be at least a 2 year lag before the "sibling peak" becomes obvious).</p> <p>2. We are concerned how the movement of this 2 class year will effect the yearly organisation of teaching staff? And will this be to the detriment of teaching standards?</p> <p>On the whole it has been our observation that teachers tend to teach the same year for at least 2 consecutive years. Some teachers, around 50%, have taught the same year for at least 3 consecutive years. This may well be a successful strategy contributing to the good ofsted results. How will this change when we are going to see 2 teachers every year required to teach a double year group, and a reshuffle now a necessity?</p> <p>3. For 7 years extra resources are going to have to be purchased yearly for the extra class that are relevant to their stage of educational development as they move up the school. Resources that might be required for only that one year. Is extra money available for this on an ongoing basis?</p> <p>4. We too are concerned about the overcrowding in the central aisle of the school (already often noisy from year R role play and small group teaching), the assembly hall, the loss of the music room, its existing music storage and the storage resources in it bought last year by the PTA for the benefit of the children (plus</p>

	<p>its use for meetings and after school clubs). We are also concerned about the increase to the already chaotic and dangerous traffic outside the school at the beginning and end of the day and would point out that the addition of 30 families living outside catchment are more likely to drive to school and add to this. Have the school's neighbours been invited to comment during the consultation period?</p> <p>5. Why are the schools local to where these children live not being used for them or expanded? I was told there are empty classrooms in one city centre school.</p> <p>6. Are the demographics of the central Southampton area (where we understand the "bulge" to be), different to the current catchment area in terms of social deprivation and/or the percentage of non-English language speaking children at school entry? If so is this move likely to increase the diversity of <u>needs</u> in the class and inevitably affect the way education is delivered to the group? And if this is anticipated, is adequate language support going to be put in place to ensure that every child develops optimally and the teacher can still do her job to the same standard as currently at Bitterne Manor?</p> <p>7. Are there any plans to permanently increase the size of the school?</p>
20/01/2014	<p>Firstly, many thanks for your reply. It is much appreciated, though it leaves me much disturbed.</p> <p>I shall be attending the Q&A meeting with the LA at the school on 28th January, where I, among others will be asking questions.</p> <p>Top of the list of questions will be those of health and safety. Mine will be – "Has the LA paid due consideration to the risk assessment for additional traffic in the area at drop off / pick up time?"</p> <p>Your statement <i>"While there may be some additional traffic we do not feel that this would be significant enough to create a safety concern."</i> is far from satisfactory. Only last month there was an RTA as a direct result of congestion due to school related traffic.</p> <p>The school has already put schemes in place that cover your statement: <i>"we expect that the school will seek to encourage more sustainable travel to and from the site, via its School Travel Plan"</i> That being the case, traffic will increase pro-rata. Therefore, the risk to children will increase. There can be no other outcome.</p> <p>A policy forced upon the school that includes the public highway cannot be their responsibility.</p> <p>Parents and, I am sure, the school will expect a satisfactory answer to the above question.</p>
16/01/2014	<p>Thank you for your rather quick response to my concerns. I however am a little disappointed that there is no comment with regards to someone visiting the school site at 3.20pm to visualise the utter chaos at this time of day and that yes a further 30 cars would indeed have a major impact on the children's safety.</p> <p>I am disappointed at your response to the fact that facilities at the school are</p>

	<p>currently adequate for the number of pupils at the school at present and will not accommodate a further 30 children, and certainly when there are 60 year 6 pupils the facilities such as the hall will not accommodate the whole school. I am fortunate that my daughter will be in years 4, 5 and 6 when these changes happen and therefore I am hoping will not effect her too much and that I shall be looking at alternative schools for my youngest daughter due to start school in 2017 which is a great shame after 3 of my other children attending this lovely little primary school.</p> <p>I understand you need to accommodate children but a couple of years ago a local school was closed down which put strain onto our already popular school.</p> <p>I am unsure whether there is any point in attending the consultation evening at the school as the answers you have given would suggest to me this is not a debatable subject but a forgone conclusion.</p>
15/01/2014	<p>I am writing as a very concerned parent from Bitterne Manor Primary School. In connection with the proposal to expand Bitterne Manor <u>Primary</u> School in September 2015. I have massive concerns to an increase in our small primary school.</p> <p>Firstly the school is situated in a small part residential and part industrial dead end road, as it is the amount of cars and lorries frequenting this area in the mornings is far greater than the road should be able to cope with however it is accessible due to the drop off times for children being a 15 minute window. However the evenings are a much different scenario. I would like to suggest you pay a visit to the school at 3pm onwards particularly if it is raining! the road is congested and parents already park over pavements and residents driveways, at times it is gridlocked due to the number of parents collecting their children in a vehicle, it is already a very dangerous area with no safety patrol and no control over parents illegal and unsafe parking/driving without adding a further 30 parents and cars. I have taken a few pictures of various evening pick ups from school of which I will forward on to you.</p> <p>Secondly the school I picked for all of my children from 10 years ago to my third daughter now being in year 2 is a primary school and the fact that both my older daughters knew the majority of children in their school right through from reception class to year 6 and when they left the school. The assemblies involve all year groups and the children benefit from seeing younger and older childrens' achievements. Sports day also involves all the children from reception through to year 6 and encourages all the children despite ability.</p> <p>Also the Christmas performance involves all the children and all parents manage to see their children perform in this if there is an increase in numbers none of this will be possible for safety reasons.</p> <p>Thirdly as the children get bigger 60 year 6 pupils will have a massive effect of the school we have a small primary school and surely increasing the numbers, even for one year takes away the whole ethos of a "Primary" school.</p> <p>I have had a child in this school since 2002 and it is very upsetting to think of these changes happening to our school but my biggest concern will be the safety of our children on this small road with such a huge amount of school traffic.</p> <p>I shall look forward to hearing your response to my concerns.</p>
18/12/2013	<p>Many thanks to Bitterne Manor Primary School for forwarding the recent letter (attached) Re. the above from the People Directorate at Southampton City Council.</p> <p>I am writing to you as a parent of a year R child at Bitterne Manor Primary School. I would be grateful for a response which expands on the information given and helps to show a completeness of vision for the seven years of increased numbers to be addressed.</p> <p>I have CC'ed out Peartree Councillors, as they may wish to be involved in the</p>

	<p>consultation process.</p> <p>Answers to my questions below will demonstrate the Councils completeness of vision and reassure the co- cosignatory parents below, among others.</p> <p>The letter does not set any expectation for response times to communications. A swift response would be appreciated so that I may input to the consultation if appropriate. I will follow this letter up by telephone to your office in five working days. Please be assured that, if no expectation is set, I shall repeat that process until a response is obtained.</p> <p>The Council letter explains the pending pupil numbers problem that the Council are seeing and current measures proposed, related to Bitterne Manor Primary School, to address it. I understand the proposed measures to be:</p> <ol style="list-style-type: none"> 1. The music room would be converted into a staff room; 2. The current staff room would be converted into an early years space; and 3. The early years space would be converted into a classroom. <p>This limited information is clear, but questions remain and detail is lacking. It is not, therefore, possible to come to a conclusion as to how well constructed the plans are and significant parental concern exists. My questions are as follow:</p> <ol style="list-style-type: none"> 1. What are the parameters for the Consultation Process for Southampton City Council? <p>A detailed timetable, terms of engagement and sought outcome would be helpful. Indeed, it seems odd not to have them. Note – neither of the DoE or SCC web portals provide information. In the absence of direct published material, I have used the reasonable SCC Compact Consultation Code of Practice as an initial benchmark for engagement. http://www.southampton.gov.uk/Images/Compact%20Consultation%20code%20of%20practice_tcm46-280614.pdf</p> <ol style="list-style-type: none"> 2. Are the proposed measures above specific to Bitterne Manor Primary School? 3. If the answer to 2 above is “no” - why not? 4. What is the plan for Music lesson provision post Music room conversion to staff room? 5. How will lesson schedules be modified to accommodate the increased class number? E.G. for shared area lessons such as PE, Music and Assembly. 6. Has the, already congested, parking situation at school start/end been considered? 7. How will out of catchment intake impact in-catchment intake of those in the additional year be handled? (Siblings, new movers?) <p>I look forward to a swift and helpful response,</p>
09/12/2013	<p>I am a parent of Bitterne Manor Primary School with children in years 3 and 5. I have received a copy of the letter proposing the changes to be made to accommodate an extra class intake for September 2015...My concerns are.</p> <p>At present the internal area of the school is crowded. When teaching assistants conduct lessons with small groups outside each classroom, the corridor becomes busy and the noise level increases. The hall currently cannot accommodate all parents at one time for events like school Christmas production. This has to be held on 2 sessions and then</p>

tickets limited to 2 per family which causes problems already for families with children at secondary school. Does that mean we just don't hold those events which the children proudly take part in?

The hall doubles as the lunch canteen too...Already lunches have to be arranged in 2 seating's surely another 30 children would put strain on the space and the staff.

The current Early Years room have their own Toilet facilities, to move their room to the staff room, would this involve moving these facilities too or are they expected to use the main schools which would mean staff having to supervise the children there too. At present early years have no reason to enter the area of the main school, they have everything they need in their own classroom and their own outdoor space. I think too the staff room is a much smaller space for them than their current room.

This will not apply to myself. However if many of the 60 children on that intake are first children families, then for 7 years their siblings will take priority and be guaranteed a space whether they remain in catchment or not, reducing the chances of local children getting a place in future. Do local families know that the chances of them getting a place in their very local school will be very slim? This happened a couple of years ago where families within a stones through of the school did not get a place and now travel to Glenfield each day.

I believe the PTA have paid for a lot of storage and equipment in the music room. If our parents knew that this facility paid for with their contributions would be taken away then we may lose the support of parents' donations for future projects.

I know these changes won't affect myself in the long term as my eldest will be at secondary and my youngest only 2 years to go when these changes are planned but the school has always had great support from parents, the staff work really hard to make things work with the limited space they already have.

I thank you for taking the time to read my concerns.

To Mr Graham Talbot
Head of Education Services
Southampton City Council
Education Department
Civic Centre
Southampton
SO14 7LY

Petition Contact Details
Mr Guy Sear (Parent)
92 Athelstan Rd
Bittern
Southampton
SO194DF
Hand delivered date 28 Feb 2014 to SSC

Please take note of this public petition created by Bittern Manor Primary School parents. It is in response to SSC proposal to double the 2015/16 year intake from 30 children to 60. The current proposal will impact the school budget and resources available for the current children's education in a negative way.

This is a 20 Page petition made up of 256 signatures to the petition statement below.

**Petition Opposing the proposed closure of the music room
at Bittern Manor Primary School, currently Autumn 2015**

The closure is to increase the capacity of the school by 30 pupils with No New PARKING

NAME (Print)	POSTCODE	ROAD NAME & NUMBER (Address)	SIGNATURE
_____	_____	_____	_____
_____	_____	_____	_____

BITTERNE MANOR PRIMARY SCHOOL
PARENT MEETING TO DISCUSS THE BUILDING PROPOSALS

Held on Tuesday 28th January at 6pm

Representatives from Southampton City Council (SCC):
James Howells (JH) – School Organisation Manager
Oliver Gill (OG) – Strategy & Capital Programme Manager

Parents, members of the Governing Body, Suzy Hayward (Headteacher) and Mike Adams (Deputy Headteacher) were present.

SCC representatives had been invited to the school to enable parents to ask questions regarding the proposed additional class in Year R from September 2015 onwards, the building works required to accommodate this and the future implications of an additional class through the school.

JH explained his role at SCC. He gave a background of pupil numbers – there has been an increase in numbers of primary school pupils in Southampton city in last 10 years. There are in excess of 3200 in 2015 for YR places, which is significantly greater than the usual statistics.

SCC therefore plan to expand 20 infant/ junior schools around the city to accommodate this 'bulge'. This expansion is for one year only – SCC are expecting numbers to reduce afterwards and therefore do not wish to have empty classrooms by over-expanding school spaces.

JH explained the music room at BMPS was identified, with the plan to relocate the pre-school to the current staff room, move the staff room to the music room, and the current pre-school becomes a classroom.

Q Why 2015?

The number expected to peak that year. Statistics and birth data has been collated, which has been reliable in the past.

Q Will there be another peak?

There is no plan to expand other than this 2015 year based on the data available now.

Q Do statistics show a continuing increase in birth rate?

With the 4 year's data analysed it is expected to dip back down.

Parents argued that the trends mentioned initially would imply planning for longer term increases rather than just this time would be better.

JH – SCC are planning to ensure there are places for the expected bulge in 2015 but with the 4 year's data available where no further peak is seen it is difficult to plan further ahead.

SH noted that there are other schools which are being expanded longer term.

15-20 schools will expand on a permanent basis from that year.

SH has been assured that this will only be for the one year at BMPS.

Parents suggested that as expanding several schools is adding pressure to their resources perhaps it would make more sense to introduce a new school?

JH noted that schools cannot just be built on the belief that the birth rate will increase continuously. Statistics do not indicate this trend.

Q Is it the case that previously some schools had to close?

Yes this is an example that 10 years ago some were closed but now having to expand.

Q Re the general trend of increasing population, would that suggest the number of children was increasing perhaps this could be used to project population increases?

JH noted that the councils use the actual birth stats rather than other projections. Parents suggested asking other Local Authorities if they have a differing method for measuring increase for service provision.

Q Do you know where the 'bulge' residents are in the city?

Mostly city centre and East of the city. There is already a shortage of places in this catchment area.

Parents noted that this already causes issues with obtaining places for siblings, is adding another class for one year going to compound the problem?
JH agreed it could be seen as this but noted that sibling priority had already been confirmed for this school.

Oliver Gill joined the meeting and apologised as he was stuck in traffic.

OG noted the same planning is being applied across all areas, not just BMPS.

Parents noted that it would be better to have extra spaces in schools rather than keep putting pressure on individual schools. Logically if several schools are being expanded, perhaps building one new school would resolve the problem.

OG noted that this is one bulge year and the trend is not for all those spaces being needed. The funding is only provided for the projections of numbers and only the 4 year's of data is available.

There is a statutory obligation by SCC to provide sufficient school places.

Q Why this school?

Many schools are looked at and SCC considered the space and financial issues.

Q Do the public have access as to how the decision was arrived at?

We would need to investigate this.

Q Are there any examples where adding a class to a school has created benefits; has it been successful somewhere else?

JH and OG did not have this but would look into it. **(Action)**

A Parent gave an example of Mansel Park where they originally took an extra year but then expanded overall. JH to look for examples. **(Action)**

SH noted the main issue was the sibling places – there is the bulge but then when it drops down again how can siblings will be accommodated over catchment.

JH noted that some areas of the city have a greater population in catchment than the school can accommodate already.

Q Have there been considerations other than financial reasoning?

No, other than there are some schools that physically cannot expand.

Q Is it a 'done deal' that this school will expand?

No – the decision will be made at the cabinet meeting on 18th March (However OG mentioned April later on) **(Action-find out date)**

Q Where will the children go if the expansion is turned down?

This was not known. If another £1Million as available in budget then another option could be available!

Q How do parents put their views forward?

All responses are presented at the cabinet meeting report.

OG explained that in the meeting the concerns and considerations are discussed so all can be taken in to account in making the decision. The evidence needs to significantly strong to over take the current information.

Q Have the local residents been informed, rather than just parents?

No letter has been sent – there is no obligation to do this.

Q Would any response from residents be taken in to account at the meeting? Yes it would.

Q Has the assessment taken the local area into account?

No – only admissions.

Parents noted the current difficulties in vehicle movements and the industrial area next door, presenting a health and safety risk.

OG noted this was not an unusual problem. The assessment of the additional places is that it would not produce 30 extra cars because some alternative methods of transport can be used. Other schools (eg Bannister Park) have increased in size and used travel planning officers to incentivise alternative modes of transport.

Parents commented that offering out of catchment places would mean car traffic as the only viable option.

A Parent had written prior to Christmas highlighting the traffic – has a risk assessment been carried out?

This had not been done and OG noted there was no obligation to do this.

Parents suggested SCC representatives come to the school at 3.20pm to view the traffic issues, and that the HSE should be contacted to query an obligation towards child safety implications.

OG noted that this is not the first expansion that has been undertaken and has not been risk assessed.

Q Have any of the schools which have been expanded got the same comparable access?

JH did not think of any with industrial areas nearby but cul de sac expansions have taken place. OG will explore this. **(action)**

There was discussion on the proportion of car users and using alternative transport.

JH noted a travel study was carried out in 2012 – 20% of parents drove to the school (JH to look up catchment vs out of catchment data - **action**)

Q The school was built 1991 for 7 classes of 30 (plus 1 mixed class but there is now a pre-school instead of the mixed class). Has there been an assessment on the building reference fire safety standards, accessibility, toilet provision etc, for the building work to be done?

OG – the statutory guidelines have been consulted on the needs and with the expanded number this building could accommodate the size although with some additions.

Q Is this within the budget? Yes

Q Moving the pre-school may result in more staff needed, reducing places available and it may then need new premises which will cost more money?

This has been assessed and the move should not have an effect.

Q Budgets are stretched for both SCC and the school – to accommodate changes for this expansion, will some school money that is allocated for existing pupils be used?

No – the expansion will be fully funded.

Parents noted that additional equipment will be needed in each year the expanded class goes through the school as each year needs appropriate resources.

JH – the money follows the pupils through the school so should not have an impact.

The parents' example – small chairs and tables are needed in Year R (which will be provided) but compared to Y6-size children, the impact is the school would have to fund this.

Q Is there a guarantee on the works carried out in terms of repairs?

OG noted this was irrelevant to the expansion argument; the capital funding allocated to the school is not having to fund an increased in size of building.

Parents noted that the curriculum offer at BMPS is based on the current resources and this is the reason many parents chose this school – if there is no where to keep resources eg for music, then this will detract from the school offer.

During the school day there are many small teaching groups using the whole school area and by adding more pupils this will reduce this space and opportunity for small group teaching.

JH and OG noted that there is no intention to detract from the curriculum offer but the expansion complies with legal guidelines and expansion has worked in other schools with less space.

Parents felt the focus from SCC is on finance rather than the needs of the children and their achievement. The school is working very hard to increase educational standards but this may be impacted and reduce standards.

OG noted that the newer schools built have less space than BMPS and still achieve good Ofsted grading.

Parents felt that the additional class was adding pressure to the staff, pupils, and parents who are trying to achieve standards, although stated they felt the staff would continue strive to maintain those standards with the added pressure.

JH to consult education advisors (former teachers themselves) but the trend previously has not shown a drop in standards **(action)**

Parents noted the current success at BMPS in teachers remaining with the same classes for more than one year which seems to add to the achievement, but this would not be possible with an additional class.

OG/JH to look up ways to manage this from other schools. **(action)**

Q Has SCC feedback from teachers and staff from other schools which have been expanded?

JH will speak to colleagues **(action)**

SH noted that this would not be the SCC decision on how the school was run.

It makes an extra consideration for the SLT - parents voiced concerns for the staff and governors in having to manager this.

OG again noted that as this was not the first time expansion has been done and there has been no negative impact elsewhere.

SCC are willing to engage with the standards team to review impact.

Q The city centre residential make up is different form current catchment for BMPS – what happens if population demographics are different and more support needed for, say, EAL?

It was not known, but SH noted that currently additional language support is funded by the school not the LA. The school gets money per pupil and some extra money for children with statements.

Q What time frame is in place to deal with the actions from this meeting? JH to start on the actions this week.

Q Will there be a further opportunity to feedback on the questions asked?

JH could send a 'Q&A' sheet. If a meeting is useful there may be time to have another meeting.

JH encouraged parents to send their questions and concerns to the email address provided in SH's letter. **(action)**. SH to resend email **(action)**

JH clarified that the comments by parents would be featured in the report to the cabinet meeting as this was a requirement of the consultation.

One parent noted they had not had response to their email – JH to **action**.

Meeting closed 7.15pm

Question & Answer document produced by the Local Authority

Bitterne Manor Primary School – Proposed Expansion

The Local Authority estimates having approximately 3,250 Year R pupils in September 2015 and, at present has, plans in place to provide 3,135 places. As we anticipate that the cohort will drop after the 2015/16 peak, the proposal is to expand several schools for one year only (i.e. the Published Admission Number would increase in September 2015 and drop back down to its current number in September 2016). One of the schools proposed for expansion is Bitterne Manor Primary School. To create the extra teaching space, the proposal is to relocate the pre-school to the staff room, the staff room to the music room and convert the pre-school into a classroom.

Unfortunately, I'm afraid there has been some miscommunication at the Council and the notice that we had planned to publish in the Daily Echo has not been published. While there is no legal obligation to publish a notice in the newspaper, the Authority has historically done this in order to notify as many people in the City as possible. We will endeavour to notify as many people as possible via the council's website and other notification services.

The questions and answers below provide some further details about the proposal and the potential impacts.

What effect will expansion have on future applicants trying to get a place at the school?

Those with a sibling at the school will get a place ahead of those that live in the catchment area. If the school had 30 additional pupils, we estimate that 1-4 extra year R pupils in any one year could be eligible for a place via sibling criteria. While those with a sibling at the school would have priority over those in catchment but no sibling, if we didn't expand the school there will be some children that currently live in the catchment now (as well as some pupils that live close by, but not in the catchment area) that may not get a place. Due to financial constraints and the limited space available at many school sites, it is not always possible to provide a place for every child that lives in a schools' catchment area, but the Local Authority is legally obliged to provide a school place for every child in the City and we will endeavour to provide places in areas of the City where demand is greatest.

How will having one bigger year group affect teaching staff and standards?

Officers within the school standards team have advised that they do not believe that the proposal will have a negative impact upon the quality of education at the school. When any school has new members of staff, the leadership will want to recruit the best person for the post. This will then, as a 'good school', be followed up by a strong induction process and ongoing professional development to ensure that the teaching is consistently good or better. This would be 'normal' practice and therefore the school systems and processes should ensure that any appointment would achieve the best outcomes for the pupils and the school. Benefits could include the wider socialisation for pupils across both classes and the opportunities for teachers to share the 'workload' in activities such as planning (taking into account the responsibility for teachers to adapt this to their own class needs) and assessment. We expect that most teachers would welcome working with a colleague.

Will there be money for additional resources?

The majority of schools budget is closely linked to the number of pupils at the school. If there are more pupils at a school, the school would have a larger budget to cover the costs of extra teaching staff and resources.

Is there enough space within communal areas (hall, central area of school) to accommodate additional children?

Department for Education guidance provides an indicative allocation for schools with 240 pupils for a hall with a total area of 172m². Bitterne Manor Primary School has a hall of 170m² and, as such, the council believes that there will be an adequate amount of space at the school to accommodate extra pupils. More to the point, it is now standard practice to build new schools with less space than the guideline allowance for ancillary areas (see, for example, the national Priority Schools building Programme). By way of comparison, Wordsworth Primary (which will eventually have up to 630 pupils) has a hall of 152m². Even with the additional pupils, Bitterne Manor would better off, in terms of relative communal space, than many other schools in the City.

How will increased traffic levels and the health and safety risks associated with this be managed?

SCC's Highways Department state that schools are responsible for doing risk assessments for onsite vehicular movement. Moreover, it is apparent that there is no such thing as a dedicated risk assessment pertaining to the expansion of a school in respect of offsite vehicular movements.

We would not deny that there may be an increase in traffic levels and, based on previous traffic survey data, we estimate an additional 6-7 sets of parent/pupils might travel to the school by car. To mitigate traffic/safety issues and encourage active travel, we would recommend that schools sign up to SCC's school travel plan programme.

Would an increase in the number of pupils attending the school from out of catchment increase traffic levels near the school?

Unfortunately, there is no way of knowing the proportion of out of catchment area pupils that travel to and from the school by car (as requested at the meeting). We would hope that parents would be willing to travel by more sustainable means or park away from the school and walk to the school gate. This would limit traffic congestion associated with the increase in pupil numbers.

Have any of the schools which have been expanded got the same comparable access?

SCC officers have visited the site at the end of the school day and, while recognising that it is busy, it is no busier several other school sites in the City, many of which have a greater number of children. For example, Bevois Town Primary on Cedar Road currently has 257 pupils (and will eventually have 420); is located on a non through road; and has significantly less on road parking than Quayside Road.

There is a small car park and limited parking space near the school, so how will the school accommodate extra vehicles?

The Local Authority anticipates that a maximum of 1-2 additional spaces would be required and we would encourage parents/visitors to use more sustainable methods of transport, or to park a little further away from the site and walk. For example, there are on road parking spaces available on Quayside Road.

Why are other schools not being considered, especially those with empty classrooms?

There are limited options for further expansion and lack of funding means we are prioritising those schools that have a non-core teaching space. Any classrooms that are currently empty will likely fill up in future years as children progress through year groups.

Are there plans to permanently increase size of school?

There are no plans to increase the size of the school on a permanent basis (i.e. to have 60 pupils in each year group) because we do not expect demand across the City to remain at 2015/16 levels and there is not enough space on the site to permanently expand the school.

How will the music curriculum be affected?

Music Services advise that music lessons will still be available at the school even if there is no dedicated music room. Children who receive individual lessons can take their instruments home, thus negating the need for them to be stored at the school. At present, one year group

receives whole group recorder lessons and, given the small size of this instrument, storage of these should not prove problematic. If whole class lessons continue, the school will need to consider what instruments are used and where these could be stored.

Other spaces could be used for music lessons, for example, some of the spaces upstairs or the hall. There are very few primary schools in the City that have a dedicated music teaching space and many of those without such a space achieve outstanding educational outcomes, so the LA does not believe that this would have a detrimental effect on the music curriculum at the school.

Is the proposed classroom space big enough to accommodate 30 children?

Our data shows that the proposed classroom 51m², which is adequate for a classroom. There are other schools in the City have smaller classrooms than this.

Will any building works will be disruptive to staff and pupils at the school?

If the proposal is approved, any building works would take place during the school holidays so there should not be any disruption to staff or pupils.

Has consideration given to health & safety regulations, fire risks and toilet requirements associated with the expansion of the school?

The Local Authority, as the owner of the school building and employer of staff, would ensure all statutory obligations met.

Is the proposed space for the pre-school adequate to accommodate their needs and requirements?

Early Years colleagues and the pre-school have been consulted about the proposal and are content that the space is suitable.

Will the pre-school still be able to use communal areas in the school if the school expands?

The school can decide if/when the pre-school uses other parts of the school. Use of communal areas could be phased to allow all parties to continue to use these areas.

If the pre-school is moved to a different space, will it be able to accommodate enough children to cover its costs?

If relocated, the pre-school would accommodate the same number of children as it currently does.

What will happen if demand for school places remains at 2015/16 levels in subsequent years and wouldn't it make sense to build more permanent school places?

Our forecasts indicate that pupil numbers will rise to 3,250 across City in 2015/16 and then drop to 3,100 in 2016/17. If we permanently expanded schools we could end up with lots of unused classrooms which would not be a good use of Council money and would be financially difficult for schools to manage.

Are there any examples where adding a class to a school has created benefits; has it been successful somewhere else?

Colleagues at Portsmouth City Council and Hampshire County Council have informed us that they have established bulge classes at a number of schools, thus indicating that this is not an uncommon practice. We anticipate that they will be able to provide us with some examples of practice that we can share with the school, to aid their planning for this change.

Is it a 'done deal' that this school will expand?

Southampton's Cabinet (made up of the City's councillors) will make the decision about whether or not to increase the PAN. Thus far, we have not received objections that would make the option unfeasible so officers' recommendation would be that the numbers should be increased.

How can we comment on the proposals?

You can send any comments to james.howells@southampton.gov.uk or James Howells, School Organisation & Strategy Manager, 4th Floor One Guildhall Square, Southampton, SO14 7FP. Any responses need to be sent in by 28 February 2014 and will be included in the cabinet report on 15 April 2014.

What happens next?

The consultation runs until 28 February 2014. After it closes, a report will go to Southampton's Cabinet on 15 April 2014, requesting approval to implement the admission arrangements that have been consulted on for 2015/16. The Cabinet will be asked to approve (or otherwise) the recommendations and will have copies of all responses to the consultation to help inform their decision.

If approved, officers would then start planning for the building works to be completed in time for September 2015.

Additional questions / answers raised after this document was issued:

Loss of music room – You ask why the Council is proposing to remove the Music Room at BMPS when other schools in the City are keeping theirs? I think we've been over this before, but the simple answer is that this proposal isn't about the relative space afforded to different schools in the City. Rather, it's about executing the Council's statutory responsibility to deliver sufficient pupil places across the City to meet demand and, further, to aim to locate this provision in close alignment to where the demand presents itself. Furthermore, contrary to the underlying assertion that BMPS is (or will be) in some way constrained/relatively under-provided for in terms of space, I can assure you that such is simply not the case. To take the issue in the abstract, the Government's Guidelines for Primary School Buildings provide a guideline total floor area for a Primary School of 210 pupils (Bitterne Manor's current NoR) of 1,285m² and for a Primary School of 240 pupils (Bitterne Manor's proposed NoR, should the expansion be approved) of 1,420m². Bitterne Manor's actual floor area is 1,487m². This demonstrates that the school is currently significantly over-provided for in terms of space and, moreover, that if the expansion proposal were to be approved, they would still have surplus area, relative to the Guidelines. Furthermore, looking at the issue through the lens of the Southampton context, it is again clear that the school is extremely well provided for in terms of space. Of the five 1FE schools (i.e. those with 210 pupils) in the City, Bitterne Manor has the second largest total floor area. Indeed, it has 36% more space than the smallest of these schools.

Governors' support and responsibilities – You assert that the Council's having not provided you with the full details of the proposed means of expansion prevents the Governing Body of BMPS from executing its duties under the School Organisation Guidance (2014). Your reference to the list of tasks that a governing body have to complete before making a change to the school (i.e. capital funding, suitable accommodation) is not relevant in this case because it is the Local Authority and not the Governing Body who are proposing this expansion and will be the decision maker. As such, there is no obligation for the governing body to ensure that these tasks have been completed.

Conflict with the Government's aim to increase the autonomy of schools – You ask the Council to demonstrate how it is supporting BMPS to "have more control when making decisions about their size" (School Organisation Guidance, 2014). I am afraid that you have taken this quotation out of context. The Guidance that you refer to is directed at providing autonomy to schools in cases where they want to expand the size of their school, not in cases where they wish to veto a Council-led expansion. If, in line with this Guidance, a school with the resources to do so approached the authority expressing a desire to expand, all else being equal, we would be fully supportive of any such ambition.

Value for money – You assert that the conversion of the music Room does not represent good value for money, on the basis that it results in the loss of this facility. Firstly, with reference to your quote from the School Organisation Plan, you will note that value for money

is one of four considerations that the Council takes into account when making assessments of where to locate expansions. It is not the case that a given proposal must fulfil all of these criteria. Rather, it is a case of weighing up all four of these factors for different expansion options, so as to determine which option best delivers against the four on balance. This does not necessitate/require that all four criteria will always be satisfied. Moreover, I cannot concur with your assessment that this proposal does not represent value for money. Quite simply, there are many schools within the City that deliver an outstanding level of education without access to a Music Room. Furthermore, a number of schools within the City have lost access to such ancillary space through our expansions programme, without a subsequent deleterious impact on educational attainment. The implication is that a Music Room, whilst potentially being a “nice to have”, is not a necessary component of a school in terms of the delivery of education. As such, the conversion of such a space (if more cost effective than new build) does represent good value for money.

Ofsted require consultation with parents of ‘wrap-around’ care. No such consultation has taken place with parents. By removing the music room the council are removing the options that parents have for wrap-around care, which the school currently does not provide, and has not consulted with parents on.

Should the school wish to establish a breakfast/after school club the Local Authority believes that this provision could be delivered from a classroom space. This approach is used by a number of other schools in the City.